



Ripley Parish Council

The Parish Review

Spring 2014



Lisanne Mealing
Chairman
225613
Planning
Communication
Environment
Finance



Jennie Cliff
Vice Chairman
224051
Planning
Environment
Highways



Colin Cross
Councillor
224107
Communication
Environment
Finance



Vernon
Wood
Councillor
225098
Planning
Environment



Richard
Ayeats
Councillor
224989
Planning
Highways



Caspar
Hancock
Councillor
07974 355625
Planning
Environment



Suzie Powell-
Cullingford
Councillor
225303
Planning
Finance



Alison Jones
Clerk
Council Office
Ripley Village
Hall
224847

**Sunday 10th August
2014**



Ride London London— Surrey Cycle Road Races

The race route has been announced! The cyclists will be coming down Newark Lane, across the High Street and up Rose Lane as last year. For a map of the route go to www.prudentialridelondon.co.uk

Road closures will be in place from 5.00am until 12.00 noon with the first amateur cyclists arriving at about 7.30am. There will be a rolling road closure for the professional race for 20 minutes approximately at about 2.20pm.

There will be 2 dedicated pedestrian crossing points with stewards to assist. The race will be stopped to allow emergency vehicles through if necessary.

Local volunteers are wanted to help at the event. The 2 roles available for Ripley are

- Crossing point marshals—assisting pedestrians across designated crossing points
- Stewarding buddies— people to work with trained stewards providing local information

Full training is given to crossing point marshals. Volunteers will receive lunch and an event T-shirt on the day.

For further information e-mail :
volunteers@ridelondon.co.uk

WHITE HART COURT

Building at White Hart Court is continuing at a pace. The first 8 homes to be finished are to be advertised for sale at market rates in April. Shared ownership and rental properties will become available later in the year.

If you are interested in any of the affordable homes you must be registered on the Guildford Borough Council Housing Register. Application forms are available on the website www.guildford.gov.uk or contact the Borough Council by phone 01483 444244 or e-mail housingadvice@guildford.gov.uk

Ripley Parish Council plays no part in the process of allocating properties to tenants.

10 dwellings out of the 37 affordable homes are for those with a Ripley connection. The remainder of the affordable housing is available for applicants across the Borough.

Superfast Broadband is coming to Ripley!

Go to www.superfastsurrey.org.uk and use the post-code checker to confirm whether superfast broadband is available in your area.

If it is available and you wish to take advantage of the improved speeds and reliability, you need to contact your internet service provider and ask to upgrade your account to a fibre broadband service. Alternatively you may decide to choose a new supplier.



Flooding Issues



Following the flooding which occurred in the parish in the new year, the parish council has built up a file of photographs and statements provided by residents. This information has been passed on to the Borough Council in order to assist them in identifying "at risk" areas. It will also be useful to the parish council when considering planning applications.

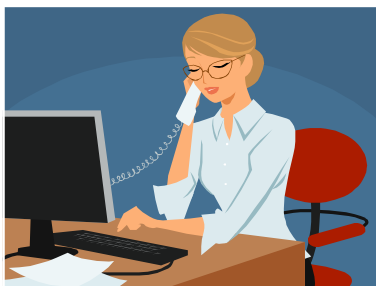
With support from the Surrey County Council Local Committee budget and Lengthsman scheme, the parish council has organised ditch clearance on Rose Lane, Grove Heath Road and Portsmouth Road in order to improve the drainage in these areas. Our thanks go to Surrey County Councillor Bill Barker for his assistance in arranging this finance.

NEIGHBOURHOOD PLANNING

Neighbourhood planning is an important mechanism by which local people can control development in their area. It cannot be used to stop all development but can provide direction on the type of development needed in Ripley. Much consultation must take place and so volunteers are needed both on the steering group and as workers on the ground. For more information, please contact the parish council office

JOB VACANCY

The parish council will be advertising for a new clerk after Easter as the present clerk is retiring. The post is for 25 hours per week including evening meetings. The office is located at the rear of Ripley Village Hall.



The work is very varied. It involves supporting and advising the council in their decision making and assisting members of the public as necessary.

Administration, minute taking, dealing with finance, managing the allotments, burial ground, the Green and playground, communications, risk management all form part of the role.

For more details, please contact the parish clerk on 01483 224847 or ripleyparish@btconnect.com

ANNUAL PARISH MEETING

Thursday 29th May 2014 at 7.30pm
In the Church Room to the rear of the Parish Church, High Street, Ripley.

Speaker: Tim Harrold of Campaign to Protect Rural England

Topic: Planning and the Guildford Local Plan

Come and hear what the parish council has been doing and bring your questions.



Do you have green fingers?

Allotment Vacancies

Several allotments at the site on Rose Lane have become available for immediate use, both full size and half size.

Rent is £33 per year for a full size plot, £16.50 per year for a half size. Concessions available.

Please contact the Clerk for more information on 01483 224847 or ripleyparish@btconnect.com

Ripley Good Neighbours

Ripley Good Neighbours aims to offer any support that a good neighbour might offer such as: occasional help with transport, shopping, collecting prescriptions, dog walking etc.

Ripley Good Neighbours is open 10am –12 noon Monday to Friday (except Bank holidays) and can be contacted on 01483 210007. Leave your name and number and a duty officer will contact you. The duty officer will find a volunteer and let you know when they have found someone. Please give 48 hours notice if possible.

Help is free but donations are welcome to help with transport costs.

Would you like to be a volunteer?

Call 01483 210007 for details of how you can help.

Join us at the next Parish Council meeting

Thursday 24th April 2014 in the Church Room at the Parish Church, High Street, Ripley
Public questions 7.30-7.45pm